

EXCLUSIVE BRANDS

Our Exclusive Brands deliver the latest technologies for residential and commercial facilities at the highest industry standards.





ADI EXCLUSIVE BRANDS

Always available and in stock, ADI Exclusive Brands offer a wide range of industry-leading products to support any installation. Delivering exceptional value and product support, our products meet the highest industry standards and are backed by competitive warranties.





Contents

1 Cameras & NVRs	8 - 9
2 Monitors & Displays	10 - 14
3 Monitor Brackets	15
4 Residential Audio Video	16
5 Cable & Wire	18 - 21
6 Cable & Wire - Accessories & Tools	22 - 23
7 Batteries	24
8 Network Switches	25
9 Power Supplies	26 - 27
10 Access Control	28 - 29
11 Fire & Emergency Lighting	30 - 31
12 Intrusion Contacts	32
13 Enclosures, Tools & Hardware	33 - 37
14 Video Accessories	38



Call

Sales Dpt.: +420 543 558 111

Tech Support: +420 543 558 200



Click

www.adiglobal.cz/en

sales.cz@adiglobal.com



Address

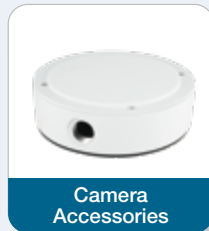
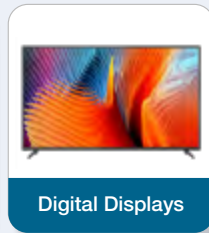
ADI Global Distribution

Havránkova 33, 619 00 Brno, Czech Republic



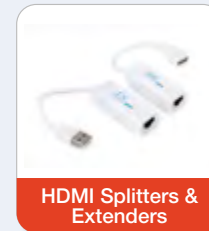
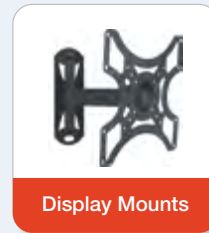
Capture by ADI

All our Capture by ADI monitors, cameras and NVRs are carefully chosen to deliver high quality and value. Our exclusive brand offers top performance in small and mid-sized residential and commercial properties.



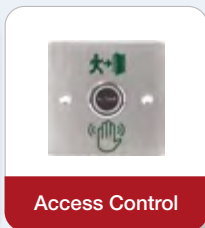
AVARRO™

AVARRO AV solutions deliver professional grade performance engineered for the toughest applications. Offering superior quality and support for residential and commercial installs to ensure a hassle free experience.





Designed for professionals, ADI PRO products encompass a wide range of categories including wire, cabling solutions, tools and hardware, intrusion, fire and access control. Providing quality you can rely on to get the job done right.



Durable and dependable, UltraTech by ADI batteries and power products can power alarm systems to safeguard any industrial and residential sector.





DAY & NIGHT

Day and night vision cameras automatically adjust from full colour footage during the daytime, to black and white footage at night time, or in situations where there is minimal to no ambient lighting.



5MP IP

5MP with a resolution of 2608x1960 pixels. This provides a crisp image.



BUILT IN MIC

Allows simultaneous video and audio streaming over the network to an NVR or computer.



POE / 12VDC

Each camera has PO and 12VDC power options. The POE functionality allows simple Plug and Play to the Capture by ADI range of NVR's.



IP66

IP66

IP66 offers a high level of protection against dust and moisture. IP66 rated cameras can be installed outdoors without worrying about damage from the elements.

R4052A



SD CARD SLOT

Supports up to 256GB Micro SD/SDHC/SDXC for circular recording locally.



30M
IR

30M IR

Built in IR (infrared) LED's for high quality night time video surveillance footage.

APPLICATIONS

This camera is an ideal choice for a number of applications, from commercial installations to residential use.



MADE IN TAIWAN

Capture by ADI



The Capture by ADI range includes all components to create a secure surveillance solution.

Choose between fixed lens, varifocal lens or motorized zoom cameras, along with NVRs to fit all installation sizes - with 4, 8 or 16 channel models available.

WARRANTY 3 YEARS



Fixed Lens



CAP5R4052A
5MP Turret IP Camera

- 2.8mm, 30M IR
- Built in MIC
- SD Card Slot



CAP5R9152A
5MP Bullet IP Camera

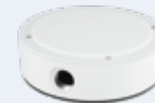
- 2.8mm, 30M IR
- Built in MIC
- SD Card Slot

WARRANTY 5 YEARS

Combine the CAPBTD04W/CAPBCR06W with the CAPBTR08W for a simple pole mount solution.



CAPBTD04W
L Shaped Wall



CAPBCR06W
Weatherproof Back Box



CAPBTR08W
Pole Mount Adaptor for BTD04W

Varifocal Lens



CAP5R9252AX

5MP Bullet IP Camera

- 2.8-12mm, 45M IR
- 2 Way Audio Path
- Additional MIC & speaker required
- SD Card Slot



CAP5R4152AX

5MP Turret IP Camera

- 2.8-12mm, 45M IR
- 2 Way Audio Path
- Additional MIC & speaker required
- SD Card Slot



CAP5R4252AX

5MP Dome IP Camera

- 2.8-12mm, 45M IR
- 2 Way Audio Path
- Additional MIC & speaker required
- SD Card Slot

Motorized Zoom Lens



CAP5R6552X

5MP Turret IP Camera

- 2.8-8mm, 30M IR
- Auto Zoom / Focus



CAP5R6452X3

5MP Dome IP Camera

- 2.8-8mm, 30M IR
- Auto Zoom / Focus
- SD Card Slot



CAP5R8952X3

5MP Bullet IP Camera

- 2.8-8mm, 30M IR
- Auto Zoom / Focus
- SD Card Slot

WARRANTY 3 YEARS

Our PoE integrated NVRs provide a cost effective and convenient solution for installations - with both recording and power facilities housed in one unit eliminating the need for additional PoE switches.



CAPNVR3104E

NVR 4 Channel PoE NVR

- 4 channel, 4 PoE
- Max 10TB HDD
- 120FPS
- 65W

CAPNVR3108E

NVR 8 Channel PoE NVR

- 8 channel, 8 PoE
- Max 10TB HDD
- 240FPS
- 96W

CAPNVR3116E

NVR 16 Channel PoE NVR

- 16 channel, 16 PoE
- Max 10TB HDD
- 480FPS
- 195W



Full HD LED CCTV Monitors

Experience Full HD CCTV security monitoring.

All Capture monitors come with 3 years manufacturers warranty as standard.

WARRANTY 3 YEARS



WBXMP19

18.5" HD LED Monitor

- 18.5" HD ELED screen
- 1366 x 768 screen resolution
- Designed specifically for 24/7 monitoring
- HDMI, VGA & Audio Inputs
- Weight: 2.6kg



WBXMP22

21.5" HD LED Monitor

- 21.5" HD ELED screen
- 1920 x 1080 screen resolution
- Designed specifically for 24/7 monitoring
- HDMI, VGA & Audio Inputs
- Weight 3.6kg



WBXML20

19.5" Full HD LED Monitor

- 19.5" HD ELED screen
- 1920 x 1080P screen resolution
- Designed specifically for 24/7 monitoring
- BNC, HDMI, VGA & Audio inputs
- Weight 2.8kg

HDMI Cables

AVARRO™

4K 30Hz

HDMI V1.4 Cables suitable for Capture by ADI 24/7 security monitors



Interconnect HDMI high speed cable

- HDMI to HDMI cable
- V1.4, 30AWG, 4K, 30Hz
- Gold plated
- Black

WBXHDMI01	1m
WBXHDMI02	2m
WBXHDMI03	3m
WBXHDMI05	5m
WBXHDMI10	10m

4K 60Hz

HDMI V2.0 Cables suitable for Capture by ADI 24/7 security monitors

Interconnect HDMI high speed cable

- HDMI to HDMI cable
- V2.0, 30AWG, 4K, 60Hz, UHD
- Gold plated
- Black

WBXHDMI01V2	1m
WBXHDMI02V2	2m
WBXHDMI03V2	3m
WBXHDMI05V2	5m
WBXHDMI10V2	10m
WBXHDMI15V2	15m



WBXML22

21.5" Full HD LED Monitor

- 21.5" HD ELED screen
- 1920 x 1080P screen resolution
- Designed specifically for 24/7 monitoring
- BNC, HDMI, VGA & Audio inputs
- Weight 3.4kg



WBXML24

23.5" Full HD LED Monitor

- 23.5" HD ELED screen
- 1920 x 1080P screen resolution
- Designed specifically for 24/7 monitoring
- BNC, HDMI, VGA & Audio inputs
- Weight 4kg



WBXML32

32" Full HD LED Monitor

- 31.5" HD ELED screen
- 1920 x 1080P screen resolution
- Designed specifically for 24/7 monitoring
- BNC, HDMI, VGA & Audio inputs
- Weight 10.3kg



4K UHD CCTV Monitors

Experience True 4K
CCTV security monitoring

All Capture monitors come with
3 years manufacturers warranty as
standard.

WARRANTY 3 YEARS



WBXML4K28

4K 28" LED Monitor

- 28.5" 4K UHD ELED screen
- 3840 x 2160 screen resolution
- Designed specifically for 24/7 monitoring
- HDMI, USB, VGA, DVI, BNC & Audio Inputs
- Weight 8.7kg



WBXML4K43

4K 43" LED Monitor

- 43" UHD 4K LED screen
- 3840 x 2160 screen resolution
- Designed specifically for 24/7 monitoring
- HDMI, USB, VGA, DVI, BNC & Audio Inputs
- Weight 11kg



WBXML4K49

4K 49" LED Monitor

- 49" UHD 4K LED screen
- 3840 x 2160 screen resolution
- Designed specifically for 24/7 monitoring
- HDMI, USB, VGA, DVI, BNC & Audio Inputs
- Weight 14.5kg



WBXML4K55

4K 55" LED Monitor

- 55" UHD 4K LED screen
- 3840 x 2160 screen resolution
- Designed specifically for 24/7 monitoring
- HDMI, USB, VGA, DVI, BNC & Audio Inputs
- Weight 19.2kg



Test Monitor

WARRANTY 1 YEAR

WBXMLTEST

- Supports Analogue IPC(H.264/ H.265/ 4K), AHD 3.0, TVI 3.0,CVI 3.0 Camera
- Step by step IPC test, quickly locate failure
- ONVIF highly compatible
- Ergonomic design, single hand operation
- Real time operation prompt
- 12V/1A power output
- Dual 100M network port, capable of detecting packet lost, monitoring network flow
- TDR RJ45 Cable Test
- 4.0 inch all viewing angle display, 800X480 resolution, 16.7M colour
- Swing keyboard input, QWERTY
- Changeable Li-polymer battery; battery working time 5 hours
- Rubberised Protective Casing
- Dual LED torch

WBXMLTBAT

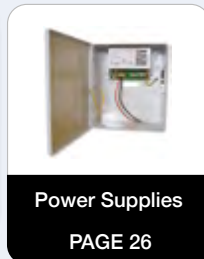
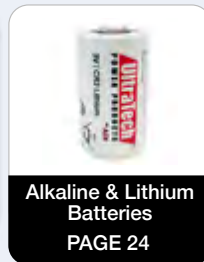
Spare Battery for Test Monitor WBXMLTEST





UltraTech[®]
POWER PRODUCTS
by ADI

Durable and dependable, UltraTech by ADI batteries and power products can power alarm systems to safeguard any industrial and residential sector.



AVARRO[™]

WARRANTY 5 YEARS

HDMI Cables - 4K 30Hz

HDMI V1.4 Cables suitable for Capture by ADI 24/7 security monitors



Interconnect HDMI high speed cable

- HDMI to HDMI cable
- V1.4, 30AWG, 4K, 30Hz
- Gold plated
- Black

WBXHDMI01	1m
WBXHDMI02	2m
WBXHDMI03	3m
WBXHDMI05	5m
WBXHDMI10	10m

HDMI Cables - 4K 60Hz UHD

HDMI V2.0 Cables suitable for Capture by ADI 24/7 security monitors



Interconnect HDMI high speed cable

- HDMI to HDMI cable
- V2.0, 30AWG, 4K, 60Hz, UHD
- Gold plated
- Black

WBXHDMI01V2	1m
WBXHDMI02V2	2m
WBXHDMI03V2	3m
WBXHDMI05V2	5m
WBXHDMI10V2	10m
WBXHDMI15V2	15m

WARRANTY 5 YEARS

WBXMB1330TM

Monitor Bracket 13-30" Tilt 100*100

- Wall mount monitor bracket
- Tilt only action
- Tilt: 0 to -12 degree
- Vesa mount: 100x100mm (max)
- Load capacity: 15kg (max)
- Black



WBXMB1342TSD

Monitor Bracket 13"-42" Swivel Double Tilt 200*200

- Wall mount monitor bracket
- Double arm tilt and swivel
- Tilt: +15 to -15 degree
- Vesa mount: 200x200mm (Max)
- Load capacity: 25kg (Max)
- Black



WBXMB3265TM

Monitor Bracket 32"-65" Tilt 400*400

- Wall mount monitor bracket
- Monitor size Up to 65"
- Tilt: +8 to -12 degree
- Vesa mount: 400x400mm (Max)
- Load capacity: 50 kg (Max)
- Black



WBXMB1332TSS

Monitor Bracket 13"-32" Swivel Single Tilt 100*100

- Wall mount monitor bracket
- Single arm tilt and swivel
- Tilt: +15 to -15 degree
- Vesa mount: 200x200mm (Max)
- Load capacity: 25kg (Max)
- Black



AVARROTM

**AV Solutions
Designed for Pros**

AVARRO provides AV solutions engineered for the toughest applications and with superior quality for residential and commercial installs.



AVARRO™



WARRANTY 3 YEARS

WBXUSBE1

100m USB Extender

- Compliant with USB 2.0 specification in short distance(<10meters);
- Provides support for any full-speed (12 Mb/s) or low-speed (1.5 Mb/s) USB device
- Some low power low-speed USB devices can work with cable up 200 meters.
- Embedded USB 1.1 Transceivers prevents signal loss;
- Downstream connector: Female, Type “B”, USB Approved Connector
- Up stream connector: Male, Type “A”, USB Approved Connect.



HDMI Splitter

- Supports 3D video format
- HDR 4K*2K
- HDMI 1.4 HDCP1.4
- RGB Format

WBXHDMIS2 x2 HDMI Output

WBXHDMIS4 x4 HDMI Output



WARRANTY 5 YEARS

WBXDPHDMI4

Display port to HDMI Converter

- V1.4b output compatible
- Compatible with HDTV, Display, Monitor, Projector and the other peripherals with HDMI Interface
- HDMI supports Ultra - HD output and the maximum resolution of up to 4k * 2k (3840 * 2160 @ 30Hz)
- Powered by display port source
- Easy to use, support plug & play with compact design



WARRANTY 3 YEARS

WBXHDMIE6IR

60m HDMI Extender

- Support HDMI 1.4a
- Support 3D
- Support highest video resolution 1080p/60Hz
- Support 1.65Gbps data rate and tmcls clock up to 165MHz
- Support 8/10/12 bit deep color
- Support AWG26 HDMI standard cable, input up to 15m, output up to 20m
- Signal transmission: By using single cat-5e or cat-6 (recommended cable instead of HDMI Cable it can extend the distance up to 60m between TX and RX.
- No loss of quality



Professional Quality Products Without Compromise

ADI PRO is an exclusive brand offering a broad range of products in wire, cabling solutions and tools and hardware.



NEW
@ **ADI**

Professional, Reliable, Great Value

ADI PRO delivers professional, quality products and exceptional value without compromise

Our Commitment to You

Fully tested, fully stocked and backed by a competitive warranty, ADI PRO's exclusive products meet or exceed industry standards

Construction Products Regulation (CPR) Euro Classes

Most cables designed for permanent installation within domestic, residential and commercial buildings are subject to the Construction Products Regulation (CPR).

Designed to help save lives and protect buildings, the regulation defines safety performance requirements in fires and classifies products into one of seven Euro Class levels - shown opposite. These classes have fire performance assessment processes based on BS EN 60332-1-2, BS EN 50399 and BS EN ISO 1716. Even though the regulation classifies products into one of seven Euro Classes, in most instances only five will apply to cables. The majority will fall between classes B2ca to Eca.

This became a requirement in 2017 so it's important to understand how to stay compliant.

Reaction to Fire BS EN ISO 1716

Example Environments

Aca
Euro Class

- No reaction to fire
- Does not contribute to fire propagation / heat emission

It will be almost impossible for a cable to meet Class Aca and due to availability, they should only be specified with extreme caution.

Reaction to Fire BS EN 50399

Example Environments

B1ca
Euro Class

- Very low reaction
- Minimum contribution to fire propagation/ heat emission

It's very unlikely that commonly used cables will be classified to Class B1ca

B2ca
Euro Class

- Low reaction
- Combustible, low flame spread & heat release contribution to the fire

Hospitals & airports, public buildings with high density of people

Cca
Euro Class

- Reduced reaction
- Combustible, moderate flame spread & heat release

Public buildings, hotels, schools or office buildings with medium density of people

Dca
Euro Class

- Improved reaction
- Combustible, moderate flame spread & heat release

Minimal cable requirement for general installation in some areas

Reaction to Fire BS EN 60332 1-2

Example Environments

Eca
Euro Class

- Basic reaction
- Combustible, limited fire spread of less than 425mm

Minimal cable requirement for general installation in some areas

Fca
Euro Class

- Undetermined
- Combustible, may have high levels of flammability more than 425mm

More likely to be used in external applications

Classes A to E have to be tested by an independent authorised laboratory. Most cables will fall into classes B2ca to Eca. Fca cables are untested. Cables with Fca ratings are mostly intended for external installations.

WARRANTY 5 YEARS



UTP Cable Eca

- UTP
- PVC
- 305m
- Colour: Grey

ADIC5UTPPVCGRY305 Cat5e

ADIC6UTPPVCGRY305 Cat6



UTP PE Cable Fca

- UTP
- PE
- 305m
- Colour: Black

ADIC5UTPPEBLK305 Cat5e

NEW ADIC6UTPPEBLK305 Cat6



UTP LSZH Cable Eca

- UTP
- LSZH
- 305m
- Colour: Purple

ADIC5UTPLSZHPUR305 Cat5e

ADIC6UTPLSZHPUR305 Cat6



UTP LSZH Cable Dca

- UTP
- LSZH
- 305m
- Dca-s2-a2-d2
- Colour: Purple

NEW ADIC5UTPDCA2PUR305 Cat5e

NEW ADIC6UTPDCA2PUR305 Cat6



U/FTP LSZH Cable Dca

- U/FTP
- LSZH
- 305m
- Dca-s1-a1-d2
- Colour: Ice Blue

NEW ADIC6AUFTPLSZHB305 CAT6a

Who is Responsible?

Each party throughout the supply chain from manufacturer to end user has a responsibility to ensure CPR compliance.

Specifiers and installers need to ensure the cables they select are appropriate for the fire risks in the building or applications and any contractual terms.

The CPR covers the way in which product is placed on the market. Crucially, it does not say what class of product should be used in any given circumstance.

ADI PRO

Professional, Reliable, Great Value

CAT5e Cables 0.5m - 5m

WARRANTY 5 YEARS



Cat5e RJ45 Patch Cable

- Cat5e
- RJ45 patch cable
- Colour: Grey
- Anti-Snag

WBXC5EGY0.5MP5	0.5m Pack of 5	
WBXC5EGY1MP5	1m Pack of 5	
WBXC5EGY2MP5	2m Pack of 5	
WBXC5EGY3MP1	3m Single	
WBXC5EGY5MP1	5m Single	
WBXC5EGY10MP1	10m Single	COMING SOON
WBXC5EGY15MP1	15m Single	COMING SOON



Cat5e RJ45 Patch Cable

- Cat5e
- RJ45 patch cable
- Colour: Blue
- Anti-Snag

WBXC5EBL0.5MP5	0.5m Pack of 5	
WBXC5EBL1MP5	1m Pack of 5	
WBXC5EBL2MP5	2m Pack of 5	
WBXC5EBL3MP1	3m Single	
WBXC5EBL5MP1	5m Single	
WBXC5EBL10MP1	10m Single	COMING SOON
WBXC5EBL15MP1	15m Single	COMING SOON



Cat5e RJ45 Patch Cable

- Cat5e
- RJ45 patch cable
- Colour: Red
- Anti-Snag

WBXC5ERD0.5MP5	0.5m Pack of 5	
WBXC5ERD1MP5	1m Pack of 5	
WBXC5ERD2MP5	2m Pack of 5	
WBXC5ERD3MP1	3m Single	
WBXC5ERD5MP1	5m Single	
WBXC5ERD10MP1	10m Single	COMING SOON
WBXC5ERD15MP1	15m Single	COMING SOON



Professional Quality Products
Without Compromise

WBXRG59B1

RG59 CU 100m Drum

- RG59
- 100m drum
- Black

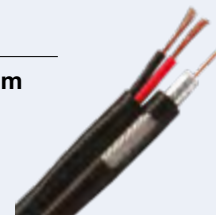
WARRANTY 5 YEARS



WBXRG59100M2C

RG59 Shotgun CU 100m Drum

- RG59
- + 2 core for low voltage
- 100m drum
- Black



See pages 22 - 23 for wire
accessories and tools

CAT6 Cables 0.5m - 5m

WARRANTY 5 YEARS



Cat6 RJ45 Patch Cable

- Cat6
- RJ45 patch cable
- Colour: Grey
- Anti-Snag

WBXC6EGY0.5MP5	0.5m Pack of 5
WBXC6EGY1MP5	1m Pack of 5
WBXC6EGY2MP5	2m Pack of 5
WBXC6EGY3MP1	3m Single
WBXC6EGY5MP1	5m Single
WBXC6EGY10MP1	10m Single COMING SOON
WBXC6EGY15MP1	15m Single COMING SOON



Cat6 RJ45 Patch Cable

- Cat6
- RJ45 patch cable
- Colour: Blue
- Anti-Snag

WBXC6EBL0.5MP5	0.5m Pack of 5
WBXC6EBL1MP5	1m Pack of 5
WBXC6EBL2MP5	2m Pack of 5
WBXC6EBL3MP1	3m Single
WBXC6EBL5MP1	5m Single
WBXC6EBL10MP1	10m Single COMING SOON
WBXC6EBL15MP1	15m Single COMING SOON

Capture

by ADI

See pages 6 - 9 for our selection of Capture Cameras



Cat6 RJ45 Patch Cable

- Cat6
- RJ45 patch cable
- Colour: Red
- Anti-Snag

WBXC6ERD0.5MP5	0.5m Pack of 5
WBXC6ERD1MP5	1m Pack of 5
WBXC6ERD2MP5	2m Pack of 5
WBXC6ERD3MP1	3m Single
WBXC6ERD5MP1	5m Single
WBXC6ERD10MP1	10m Single COMING SOON
WBXC6ERD15MP1	15m Single COMING SOON



WBXBNCM59P10 10 PACK
WBXBNCM59P50 50 PACK

BNC Crimp Connector

- RG59 BNC male crimp connector

WARRANTY 5 YEARS



WBXBNC SRP10
BNC Strain Boot 10 Pack

- RG59 BNC strain boot
- 10 pack
- Black

WARRANTY 5 YEARS



WBXBNC TOOL
BNC Insertion and Extraction Tool

- BNC Removal / Insertion
- Long Reach

WARRANTY 5 YEARS



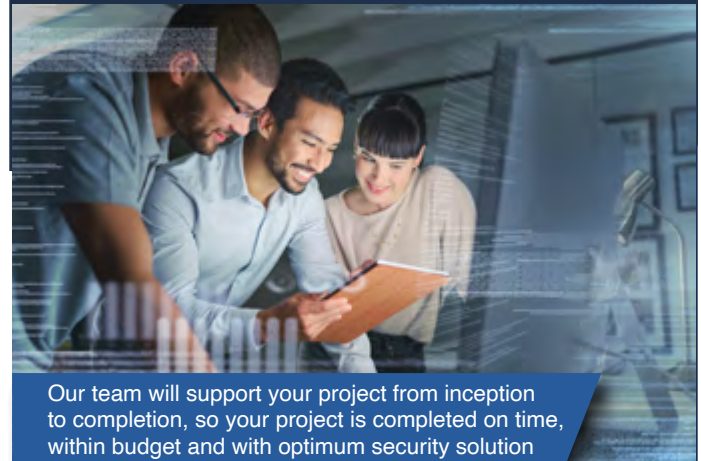
WBXRG59STIP
RG59 3 Blade Wire Stripper

- Coaxial cable stripper
- For RG58/RG59/RG6
- 3 blades

WARRANTY 1 YEAR

ADI ADDED VALUE

Looking for support with your next project?



Our team will support your project from inception to completion, so your project is completed on time, within budget and with optimum security solution



Project Setup



Training



System Design



Pre-Configuration



Location Setup



Technical Support



Product Demo Version



Products Redesign

Contact our Project Team today
Call Tech Support:
+420 543 558 200

WARRANTY 1 YEAR

WBXCATBTES

RJ45 Tester

- 2 Piece set
- Check continuity of RJ11& RJ45 cable quickly
- LED status display
- Slow and fast test switch
- Simple to use



WBXRJ45CRIMP

RJ45 Crimp Tool

- RJ crimp tool
- RJ45/RJ12/RJ11
- With cable cutter & stripper



WBXBNCM22FTP10

BNC T M-F 10 Pack

- RG59 BNC male - female T piece connector
- 10 pack



RJ45 Crimp connector

- Suitable for Cat5e cable

WBXC5ERJ45P10 (Pack of 10)

WBXC5ERJ45P100 (Pack of 100)

- Suitable for Cat6 cable

WBXC6ERJ45P10 (Pack of 10)

WBXC6ERJ45P100 (Pack of 100)



WARRANTY 5 YEARS

RJ45 Connector Rapid Fit

- Suitable for Cat5e cable

WBXC5ERAPID10 Pack of 10

WBXC5ERAPID100 Pack of 100

- Suitable for Cat6 cable

WBXC6ERAPID10 Pack of 10

WBXC6ERAPID100 Pack of 100



RJ45 CAT5/6 Strain Boots

- RJ45 strain boot
- Cat5e/Cat6

WBXCATSBP10 (Pack of 10)

WBXCATSBP100 (Pack of 100)



WBXCATCOUP

RJ45 CAT5/6 Coupler Each

- RJ45 coupler
- Cat5e & Cat6



WBXBNCFFCP10

BNC Coupler 10 Pack

- RG59 female - female connector
- 10 pack



WARRANTY 2 YEARS



UT-1220

Battery SLA, 12V, 2.3Ah

- T1 Terminal
- L70 x W48 x H98mm



UT-1232

Battery SLA, 12V, 3.2Ah

- T1 Terminal
- L134 x W67 x H60.5mm



UT-1270

Battery SLA, 12V, 7Ah

- T1 Terminal
- L151 x W65 x H94mm



UT-12120

Battery SLA, 12V, 12Ah

- T2 Terminal
- L151 x W98 x H95mm



UT-12180

Battery SLA, 12V, 18Ah

- M5 Terminal
- L182 x W77 x H168mm

IM-CR123A

CR123A 3V Lithium Battery - Each



IM-CR2032

CR2032 3V Lithium Coin Battery - Each



COMING SOON

IM-CR2

CR2 3V Lithium Battery - Each



WARRANTY 5 YEARS



0E-5PGIGUN

5 Port Gigabit Unmanaged Ethernet Switch

- 5 x 10/100/1000 Mbps
- Easy set-up plug and play
- Switching capacity 10Gbps
- Port status LED indicator



0E-8P4POEGIG

8 Port Fast Gigabit Ethernet PoE Switch

- 4 x 10/100/1000 Mbps PoE ports
- 4 x 10/100/1000 Mbps ports
- Easy set-up plug and play
- 62W PoE budget
- Port status LED indicator



0E-8P65W4POE

8 Port Fast Ethernet PoE Switch

- 4 x 10/100 Mbps ports
- Easy set-up plug and play
- 62W PoE budget
- Port status LED indicator



0E-8PGIGUN

8 Port Gigabit Unmanaged Ethernet Switch

- 8 x 10/100/1000 Mbps
- Easy set-up plug and play
- Switching capacity 10Gbps
- Port status LED indicator



0E-9P8POEGIG

9 Port Fast Gigabit Ethernet PoE Switch

- 8 x 10/100/1000 Mbps PoE ports
- 1 x 10/100/1000 Mbps port
- Easy set-up plug and play
- 130W PoE budget
- Port status LED indicator



WBXPSU4024IP

WARRANTY 3 YEARS

External IP Rated Power Supply

- Input: AC230V/50Hz, rated 3A Fuse
- Output: 1 x 4A or 4 x 1A
- Output Voltage: 24V AC
- PTC Fuse: Auto Reset PTC Fuse for each output
- Operating Temperature: -10C to +40C
- Material: Grey Polycarbonate
- IP Rating: IP66
- Weight: 2.8KG
- Dimensions: 27cm x 15cm x 8.9cm



WBXPSU5012IP

WARRANTY 3 YEARS

External IP Rated Power Supply

- AC110-230VAC
- Output: 12V DC @ 1 x 5A or 8 x 0.8A
- Auto Reset PTC Fuse
- -10 to +40C
- IP66
- 1.2Kg
- 27 x15 x 8.9cm



WBXIL2024-EU

WARRANTY 3 YEARS

Power 24V AC 2 Amp Inline PSU

- 24V AC
- 2Amp
- UK Plug



WBXIL4024-EU

WARRANTY 3 YEARS

Power 24V AC 4 Amp Inline PSU

- 24V AC
- 4Amp
- UK Plug



WBXPSUSP4

WARRANTY 5 YEARS

Female DC to 4 way DC Splitter

- DC Plug with 5.5*2.1mm connector
- Black PVC
- Nickel plated

WARRANTY 3 YEARS



**1 Amp
2 Amp**

Power 12VDC Inline PSU

- Inline power supply
- 12V DC output
- 1.2m DC cable
- 5.5*2.1mm plug



**3.5 Amp
5 Amp**

WBXIL10EU

1 Amp

WBXIL20EU

2 Amp

WBXIL35EU

3.5 Amp

WBXIL50EU

5 Amp

WARRANTY 3 YEARS



WBXDC-MALE

**DC Jack Male
10 pack**

- DC Jack
- 2.1mm connector
- Nickel plated



WBXDC-FEMALE

**Dc Jack Female
10 Pack**

- DC Jack
- 2.1mm connector
- Nickel plated



WARRANTY 3 YEARS

13.8V Switch Mode PSU in Metal Box

- Boxed power supply
- 13.8V DC output
- Tamper (Lid & Rear)
- Mains, Battery, Output & Fault LED
- Enclosure - 200 x 240 x 75mm
- Battery Compartment - 190 x 130 x 70mm

5 Amp

- Battery Compartment - 350 x 220 x 80mm

WBXPSU1A12VT	1 Amp
WBXPSU2A12VT	2 Amp
WBXPSU3A12VT	3 Amp
WBXPSU5A12VT	5 Amp

1 Amp - 2 Amp - 3 Amp



5 Amp



A range of 24VDC Power Supply Units ideal for Access Control and various other applications with Battery Backup Facility.

WBXPSU1A24VDT	1 Amp 24vDC Boxed PSU
WBXPSU2A24VDT	2 Amp 24vDC Boxed PSU
WBXPSU3A24VDT	3 Amp 24vDC Boxed PSU
WBXPSU5A24VDT	5 Amp 24vDC Boxed PSU
WBXPSU10A24VDT	10 Amp 24vDC Boxed PSU

- Input 90 to 264 Vac
- Output: Nominal 27.6VDC
- Short circuit overload protection
- Mains transient protection
- Antitamper, Front and Rear
- Back up Battery requires 24VDC



WBXPSUC12V5A4

Power Multi Output PSU Up to 4 way 5A

- CCTV Boxed Power Supply
- Multi Output
- Metal enclosure
- Upto 4 way
- Max 5Amp



WBXPSUC12V10A9

Power Multi Output PSU Up to 9 way 10A

- CCTV Boxed Power Supply
- Multi Output
- Metal enclosure
- Upto 9 way
- Max 10Amp

WBXPSUC12V16A16

Power Multi Output PSU Up to 16 way 16A

- CCTV Boxed Power Supply
- Multi Output
- Metal enclosure
- Upto 16 way
- Max 16Amp



WBXRTESSGD

**Green Dome RTE Button
Stainless Steel Surface**

- Surface Mount
- 2A @ 30VDC
- Stainless Steel
- Green Dome
- Single Gang

WARRANTY 3 YEARS



WBXRTE

**No Touch RTE Switch
Stainless Steel Surface**

- Surface Mount
- 12 - 24VDC
- Stainless Steel
- No Touch
- Single Gang

WARRANTY 3 YEARS



WBXRTE1

**RTE Switch 1 Gang 1 Way
with Back Box**

- Surface Mount
- 10A @ 250VAC
- Plastic
- Single Gang
- Single Pole

WARRANTY 3 YEARS



WBXEGSP

**Green Break Glass Surface
Single Pole**

- Break Glass
- 8A @ 24VDC
- 5A @ 220VAC
- Resettable
- Green
- Surface Mount
- Single Pole

WARRANTY 5 YEARS



WBXEGDP

**Green Break Glass Surface
Double Pole**

- Break Glass
- Resettable
- Green
- Surface Mount
- Double Pole

WARRANTY 3 YEARS



WBXEGKEY

**Test and Reset Keys for the
WBXEDSP and WBXEGDP**

- Pack of 10



WBXEGSD-COVER

**Egress Accessory
Rep Cover for
WBXEGSP & EGDP**

WARRANTY 3 YEARS

WARRANTY 3 YEARS



UltraTech[®]
POWER PRODUCTS
by ADI

WBXACCESSPSU12248A

**Multi Controller Power
Supply**

- Selectable 12VDC or 24VDC way output
- Full rated 12VDC/8A or 24DC/4A to load
- Reverse battery connection protection
- Complete with mounting posts
- Dimensions: W405 x H506 x D85mm



WBX280S

WARRANTY 3 YEARS

Magnet 280Kg Surface Unmonitored Maglock

- Surface Magnet, unmonitored
- 280Kg, 12/24 VDC Selectable



WBX280S-M

WARRANTY 3 YEARS

Magnet 280kg Surface Monitored Maglock

- Surface Magnet, monitored
- 280Kg, 12/24 VDC Selectable



WARRANTY 5 YEARS

WBX280AS

Magnet Arm Housing, WBX280 Range Maglocks



WARRANTY 5 YEARS

WBX280ZL

Magnet & Z & L Bracket To Fit WBX280S & WBX280S-M

- To Fit WBX280S & WBX280S-M



WARRANTY 3 YEARS

WBX280S-D-M

280kgs DOUBLE magnetic Lock Monitored

- 280Kg Holding Force
- Double Magnet
- Surface Mount



WARRANTY 5 YEARS

WBX280ZL-D

DOUBLE Z&L Bkt to fit WBX280S-D-M

- Satin Anodised Aluminium

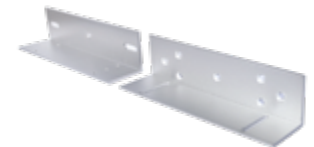


WARRANTY 3 YEARS

WBX500S-M

500Kgs Monitored Magnetic Lock

- 500Kg Holding Force
- Single Magnet
- Surface Mount



WARRANTY 5 YEARS

WBX500ZL

Z & L Bracket to fit WBX500S-M

- Satin Anodised Aluminium



WARRANTY 5 YEARS

WBX30DL

30 cm Door Loop

- Door Loop
- 30 cm



WBX45DL

45 cm Door Loop

- Door Loop
- 45 cm



WBX280ZL-AH-S

Z & L Bracket to fit WBX280

- To suit WBX280 Range of Mag Locks
- Satin Anodised Aluminium



WBX500AS

Armature Housing to fit WBX500S-M

- Satin Anodised Aluminium



WBXA4DOCR

WARRANTY 5 YEARS

A4 Document Box Red



WBXELB3W

WARRANTY 3 YEARS

**Emergency Lighting 3w
Maintained Bulkhead**



WBXELES3W

WARRANTY 3 YEARS

**Emergency Lighting Sign
3w Exit Sign Ip20**



WBXSHRED10

**Fire Accessory Back Box
Red Gland Shroud 10pk**



WBXGLRED10

**Fire Accessory Back Box
Red Glands 6-12mm 10pk**



WHILE STOCKS LAST

WBXAIRCAN

HFC Free Gas Air Duster

- HFC Free
- Non Flammable
- 400ml



WBXCT200SS

**Stainless Steel Cable Ties
(Pack of 100)**

- Stainless Steel
- Pack of 100

WBXCT400SS

**Stainless Steel Cable Ties
(Pack of 100)**

- Stainless Steel
- Pack of 100

WARRANTY 3 YEARS



WBXELTS3WI20

Emergency Lighting Ip20
LED Twin Spot 3w



WBXELTS3WI65

Emergency Lighting Ip65
LED Twin Spot 3w

WARRANTY 5 YEARS



WBXCBLI

Fire Accessory Back Box
Galve Lid, Seal & Scr



WBXFUSEKIT

Intruder Fuse Kit -
18 Fuses x 5



WBXRESKIT

Intruder Resistor Kit
9 Resistors x 30



WBXCBSSE

Fire Accessory Back Box
20mm Galve Stop End



WBXCBTB

Fire Accessory Back Box
20mm Galve Through



WBXCUB

Fire Accessory Back Box
20mm Galve U Bend

Flush Contacts



	ADIFC-G1C2-W	Grade 1, Class 2
NEW	ADIFC-G1C2-QF-M	Grade 1, Class 2
NEW	ADIFC-G2C2-MULTI-W	Grade 2, Class 2
NEW	ADIFC-G3C2-MULTI-W	Grade 3, Class 2



ADIPA-G3C2-S

Panic Button

- Grade 3
- Class 2
- Silver

Surface Contacts



	ADISC-G1C2-W	Grade 1, Class 2
	ADISC-G2C2IND-W	Grade 2, Class 2
	ADISC-G2C2MULTI-W	Grade 2, Class 2
	ADISC-G2C2-W	Grade 2, Class 2
	ADISC-G3C2MULTI-W	Grade 3, Class 2
NEW	ADISC-G2C2-MSW-W	Grade 2, Class 2
NEW	ADISC-G2C2-MULTISM	Grade 2, Class 2
NEW	ADISC-G3C2-MULTISM	Grade 3, Class 2



ADIPA-G3C2-W

Panic Button

- Grade 3
- Class 2
- White

R/S Contacts



	ADIRSA-G2C3-0.5M	Grade 2, Class 3
NEW	ADIRSA-G2C3-MUL	Grade 2, Class 3
NEW	ADIRSA-G3C3-M-0.5M	Grade 3, Class 3
	ADIRS-G2C3-0.5M	Grade 2, Class 3
	ADIRS-G2C3-1.0M	Grade 2, Class 3
NEW	ADIRS-G2C3-MULTI-W	Grade 2, Class 3
NEW	ADIRS-G3C3-MUL-1M	Grade 3, Class 3



ADIKS-3C3-BUZ

Surface Exit Switch with Buzzer

- Grade 3
- Class 2
- Lid Anti Tamper
- Anti Tamper Screws & Bit

Junction Box



	ADIJB-G3C2-10-W	Grade 3, Class 3
NEW	ADIJB-G3-10-W	Grade 3, Class 2
NEW	ADIJB-G3C2-20-W	Grade 3, Class 2
NEW	ADIJB-G3C2-24-W	Grade 3, Class 2

IP65 External Junction Box

- IP65 rating
- Material ABS
- Halogen-Free
- Insulation class II (according to IEC 61140)
- Grey / Ral 7035

WBXJB204	100x100x50mm
WBXJB206	150x110x70mm
WBXJB207	190x140x70mm
WBXJB208	240x190x90mm
WBXJB209	300x220x120mm
WBXJB210	380x300x120mm



WARRANTY 5 YEARS



WBXLDVR1 **WARRANTY 5 YEARS**

Cabinet Lockable DVR Enclosure

- Secure Cabinet, Suites DVR or NVR
- External 445 x 404 x 120mm
- Internal 400 x 400 x 91mm
- 6.0kg



WBXLDVR2 **WARRANTY 5 YEARS**

Cabinet Lockable DVR Enclosure

- Secure Cabinet, Suites DVR or NVR
- External 540 x 510 x 124mm
- Internal 510 x 478 x 103mm
- 7.9kg

WBXLDVRKEY **WARRANTY 5 YEARS**

**Cabinet 2 Replacement Keys
For WBXLDVR 1 & 2**



WARRANTY 3 YEARS



WBX10WPL

Portable Work Light

WHILE STOCKS LAST

- Portable work light
- 10 Watt
- Industrial use
- Rechargeable



WARRANTY 5 YEARS

**ENCLOSURE M20*1.5
access gland 6-12mm cable diameter**

- IP Gland
- M20*1.5
- 6-12mm Cable Access

WBXGL6-12M20P3 **Pack of 3**

WBXGL6-12M20P5 **Pack of 5**

WARRANTY 5 YEARS



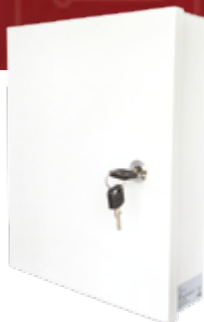
EXPANDED FIRE RANGE

For our full range of fire
products see pages 30 - 31



WBXA4DOCR

Fire Accessory A4 Document
Box Red



WBXA4DOCW

Enclosure Document A4
Document Box White



WBXDCKEY

Enclosure Document Spare
Key A4 Doc Box



**Cable Tie 200mm x 4.8mm
(Pack of 100)**

- UV protected
- 200 x 4.8mm
- Pack of 100

WBXCT200BK **Black**

WBXCT200NT **Neutral**



**Cable Tie 300mm x 4.8mm
(Pack of 100)**

- UV protected
- 300 x 4.8mm
- Pack of 100

WBXCT300BK **Black**

WBXCT300NT **Neutral**



**Stainless Steel Cable Ties
(Pack of 100)**

- AISI 304 Stainless Steel
- Pack of 100

WBXCT200SS **200x4.6mm**

WBXCT400SS **400x4.6mm**

WARRANTY 5 YEARS



WBXSC1.0/25PH

**Tool Screwdriver CPLUS
Stubby Phillips D**



WBXSC2.5/75SLVDE

**Tool Screwdriver CPLUS
Ins Slotted Drive**



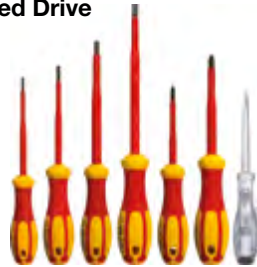
WBXSC4.0/100SLVDE

**Tool Screwdriver CPLUS
Ins Slotted Drive**



WBXSC6.5/25SL

**Tool Screwdriver CPLUS
Stubby Slotted Dr**



WBXSCSET7PCVDE

**Tool Screwdriver 7 Pc
CPLUS 1000v Set Vd**



WBX31PCSET

**Tool Screwdriver
31 Piece Bit Set**



WBXSC3.0/140TESTER

**Voltage Tester, 150-250V
Short 3x140 mm**



WBXCU161VDE

**160 mm 1000V Diagonal
Cutter (VDE)**



WBXADJPL250VDE

**250 mm 1000V Water
Pump Pliers**



WBXLN160VDE

**160 mm 1000V Long Nose
Pliers (VDE)**



WBXPL180VDE

**180 mm 1000V
Combination Pliers (VDE)**



WBXHEX6PC

**6 Piece Foldup Hexagon
Key Set**

WARRANTY 5 YEARS



WBXHEX7PCL

7 Piece Ball End Hex L
Key Set Long Arm



WBXSNAP-KNIFE18

C-Pro Snap-Off Knife
- 18 mm



WBXSAFETY-KNIFE

Safety Trimming Knife
(Trapezoid Blade)



J47-R

Trapezoid Trimming Knife
Blade - 10pc



WBXHACKSAW260

Mini Hacksaw- 260 mm



WBXHACKSAW430

Hacksaw in-Handle Fixing
System 430 mm



WBXSAW160

Wallboard Saw
(160 mm Cutting Mouth)



J36-R

Mini Hacksaw Blades,
for J36-150) 10 PC



J35-18B

Hacksaw Blades HSS
Bi-Metal-18TPI 10 PC



WBXTAPE5M

Tape Measure,
Inch/Metric 5M-16ft



WBXAC-DETECTOR

Non-Cont AC Voltage
Detector max. 1000V

WARRANTY 1 YEAR

**ADI
PRO**

WARRANTY 1 YEAR



WBXBNCCRIMP
RG59 Crimp Tool



WBXFUSEKIT
Intruder Fuse Kit -
18 Fuses X 5



WBXRESKIT
Intruder Resistor Kit
9 Resistors X 30



ADIINT110
Internal Sounder with Strobe
and Tamper Protection

- White lens
- Dimensions: 140 x 85 x 32mm



WBXRG59STIP
RG59 3 Blade Stripper

- Coaxial cable stripper
- For RG58/RG59/RG6
- 3 blades



WBXCATBTESER
RJ45 Tester

- 2 Piece set
- Check continuity of RJ11& RJ45 cable quickly
- LED status display
- Slow and fast test switch
- Simple to use



WBXRJ45CRIMP
RJ45 Crimp Tool

- RJ crimp tool
- RJ45/RJ12/RJ11
- With cable cutter & stripper



WBXVHLR1224
Relay Multi Purpose Relay 8a 12/24V

- Relay
- Board Only
- 12 / 24V Operation
- Multi Purpose



WBXTAPEW **White**
Tape PVC 19mm x 20m

- Insulation tape
- 1pc
- PVC

WARRANTY 5 YEARS



WBXHDBP1

HD Video Balun, Dual Pack 1 X PIG 1 X STD No Surge 5 MP

- 720/960P/1080P,3MP/4MP/5MP
- HD-CVI/AHD/TVI/CVBS
- Pack: pair



WBXHDPOCB1

HD Video Balun with Power over Coax

- HD Balun
- Power over Coax
- TVI, CVI, AHD & CVBS
- 4k Resolution



WBXLDVR1

Cabinet Lockable Dvr Enclosure 445 x 404 x 120mm

- Secure Cabinet
- Suites DVR or NVR
- External 445 x 404 x 120mm
- Internal 400 x 400 x 91mm
- 6.0kg



WBXHDBPV1

HD Video Balun with Power

- HD Balun
- UTP
- Power & Video
- Up to 200m
- 12V Dc



WBXGLIHD

HD Ground Loop Isolator

- Compatible with all HD-TVI, HD-CVI, AHD & CVBS analog cameras
- BNC male to BNC female with mini 20cm RG 59 coaxial pigtail lead on both sides.
- Passive, No power supply required
- Prevents video-signal distortion caused by video ground loops

WARRANTY 3 YEARS



WBXLDVR2

Cabinet Lockable Dvr Enclosure 540 x 510 x 124mm

- Secure Cabinet
- Suites DVR or NVR
- External 540 x 510 x 124mm
- Internal 510 x 478 x 103mm
- 7.9g



WBXLDVRKEY

- Spare Key
- Pack of 2





Market Leading Security, Fire and Pro AV Products

The ADI Difference



220
Warehouses
Globally



Over
24,000
Products
Available



Over
260
Leading
Brands



24/7
adiglobal.cz/en



Call

Sales Department: +420 543 558 111

Tech Support: +420 543 558 200



Click

www.adiglobal.cz/en

sales.cz@adiglobal.com



Address

ADI Global Distribution

Havránkova 33

619 00 Brno

Czech Republic

March 2024